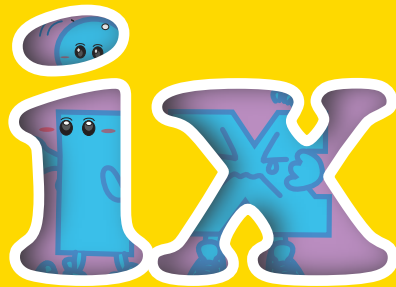


# 'in' 'it' 'ix' Book



Native-speaking English Teacher Section  
Curriculum Development Institute  
Education Bureau  
Hong Kong Special Administrative Region (HKSAR)

Published edition © Education Bureau, HKSAR Publishing 2008  
First published April 2008  
Second print September 2009  
Third print April 2010

Duplication of pages of the publication is restricted to non-profit making educational purposes only and proper acknowledgements should be made. Otherwise, no part of this publication may be produced, stored in a retrieval system or transmitted in any form or by any means without the prior permission of the Hong Kong Special Administrative Region.

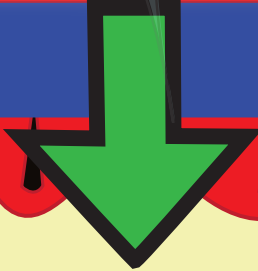
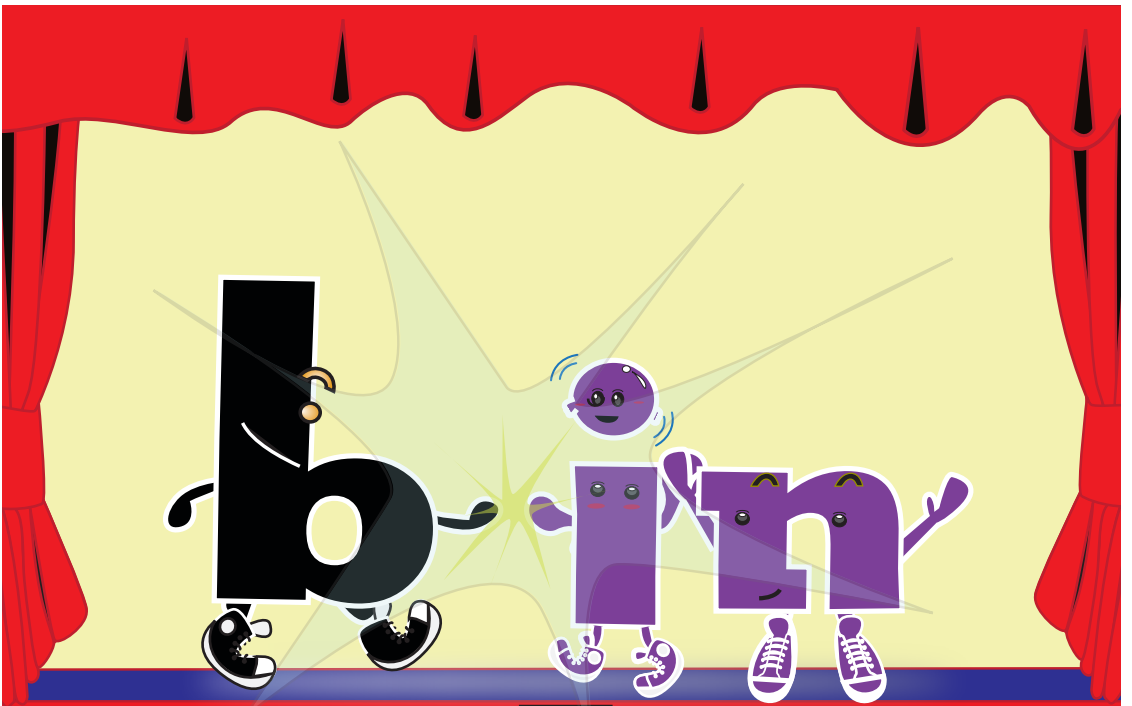
ISBN 978-988-8019-46-5

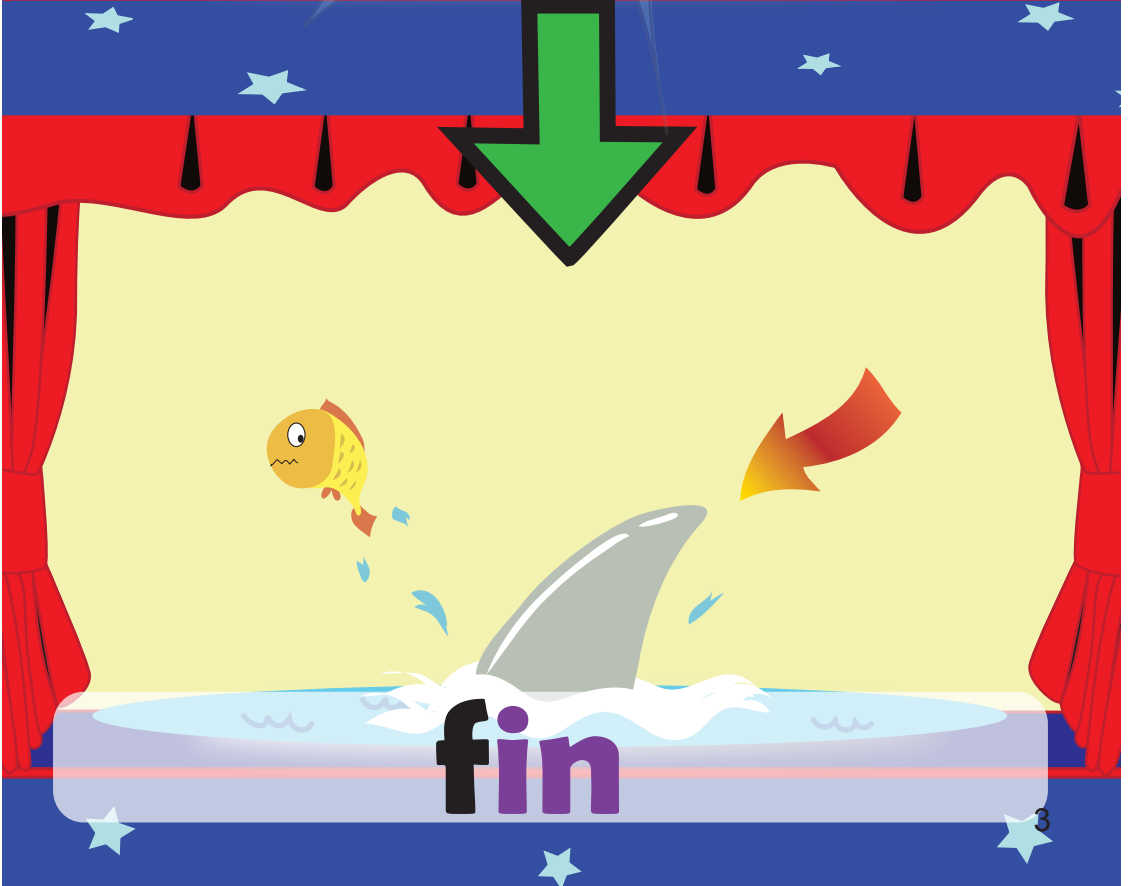
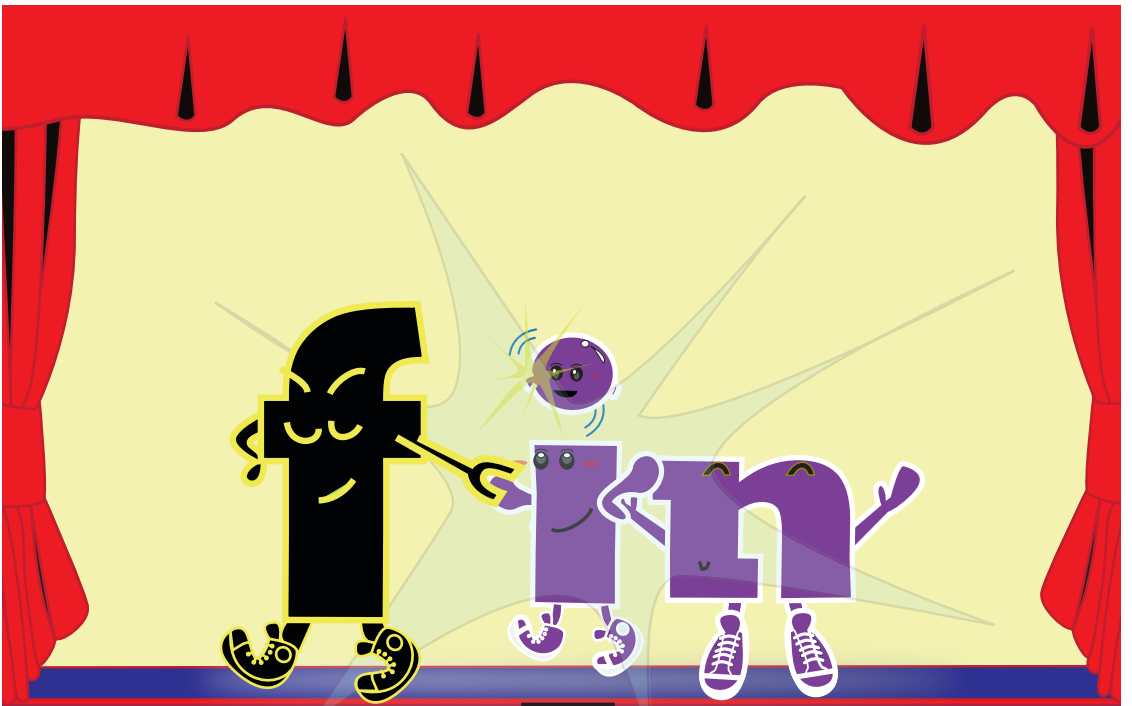
#### Acknowledgements

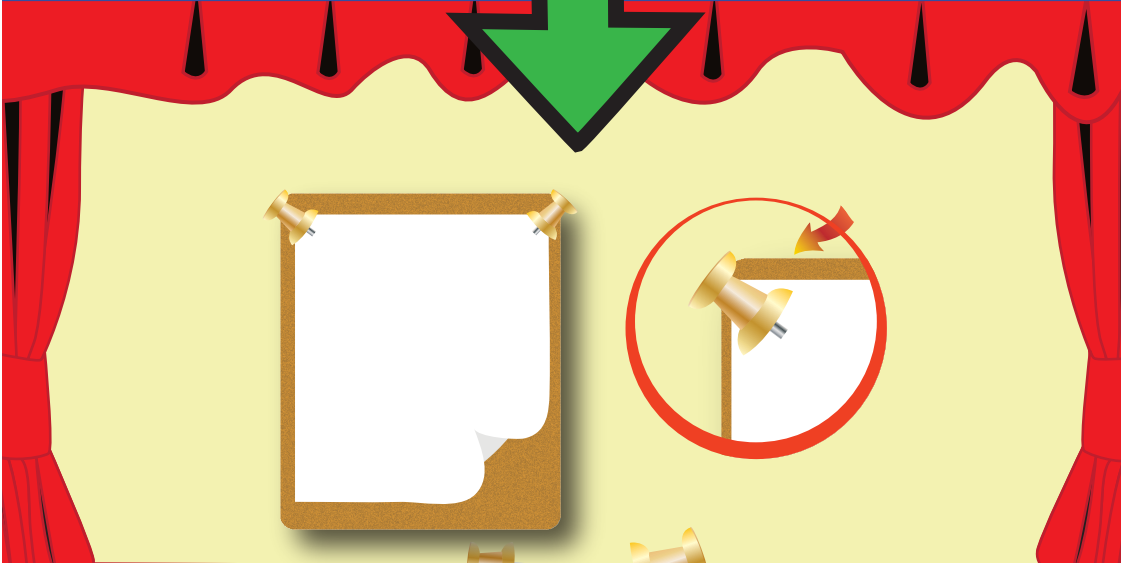
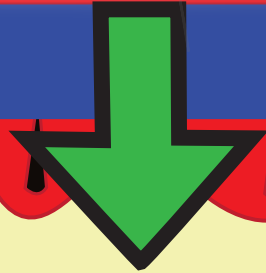
We are most grateful to the PLP-R/W Committee for the story in this publication.

We would like to express our sincere gratitude to Kitty Wong and Calvin Cheung for producing the illustrations of the story in this publication.

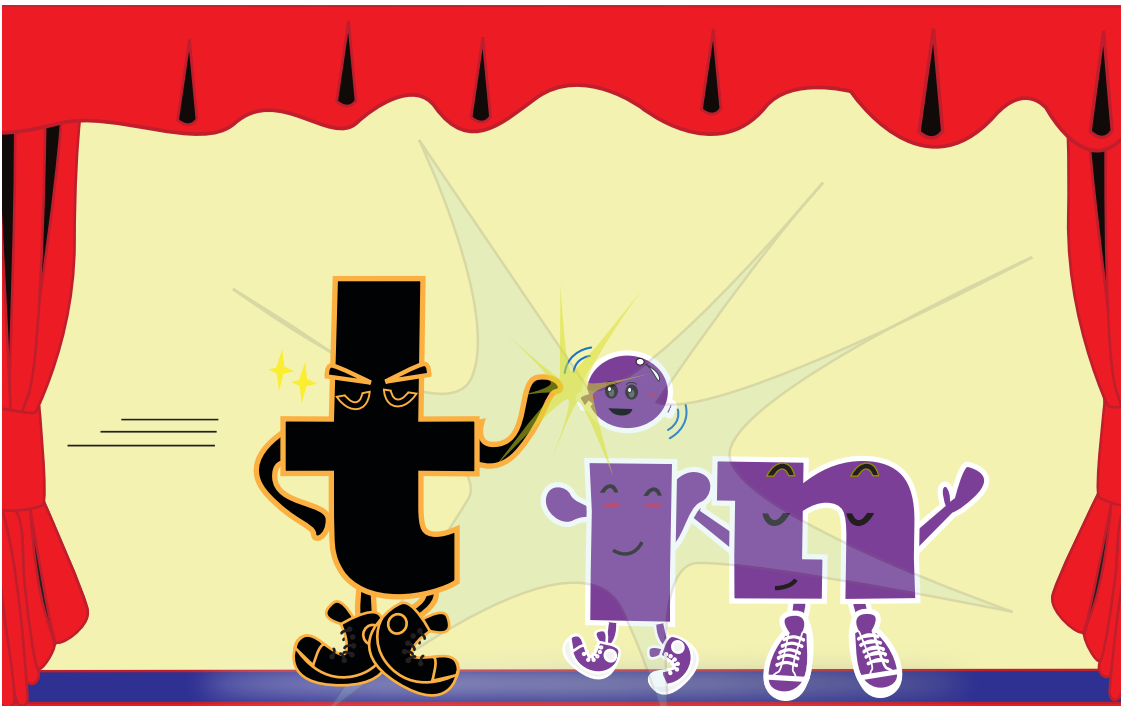
in  
it  
ix



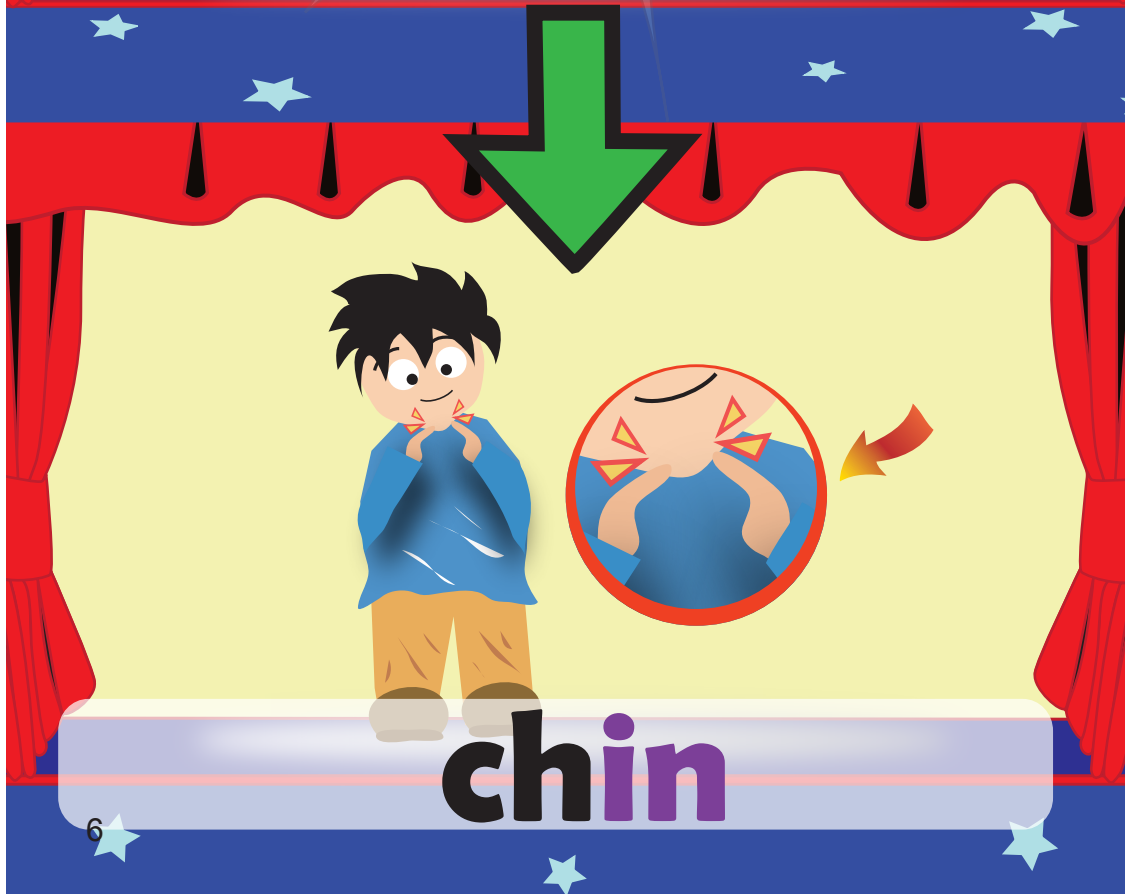
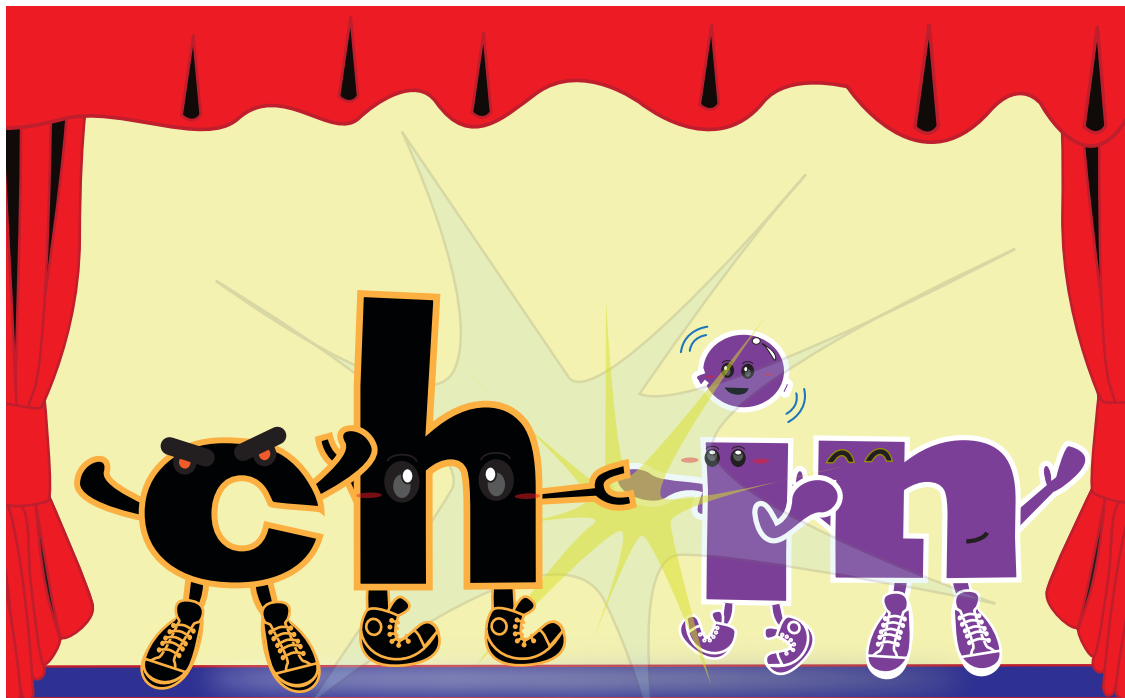




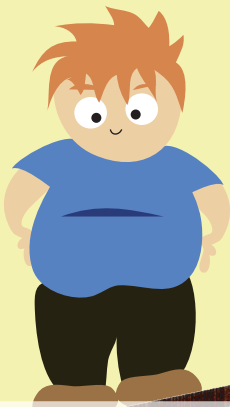
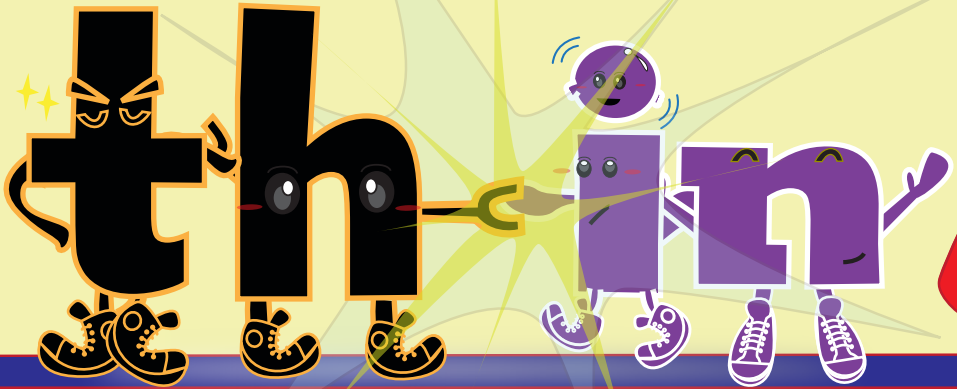
pin



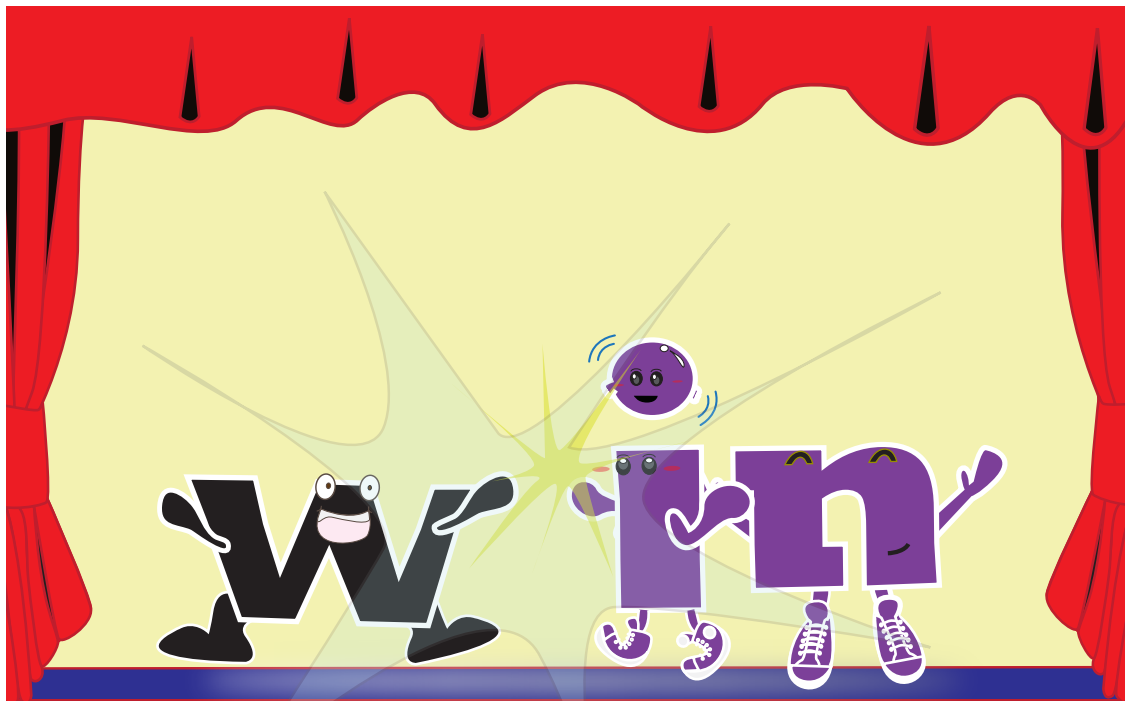
**tin**



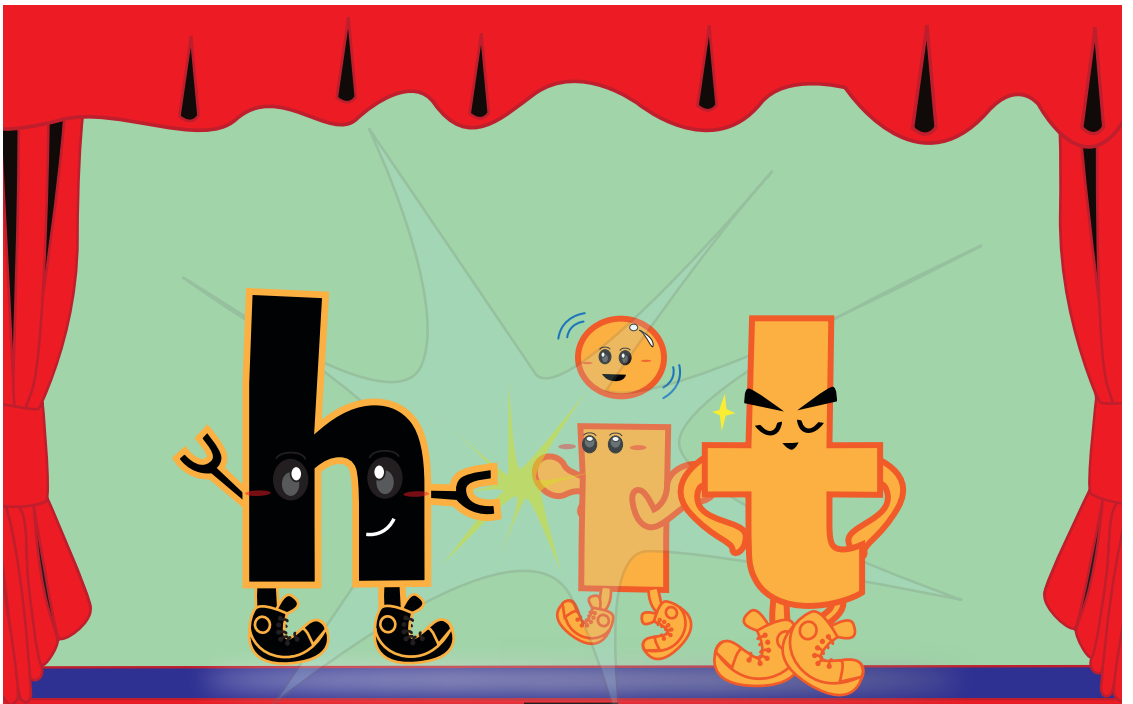


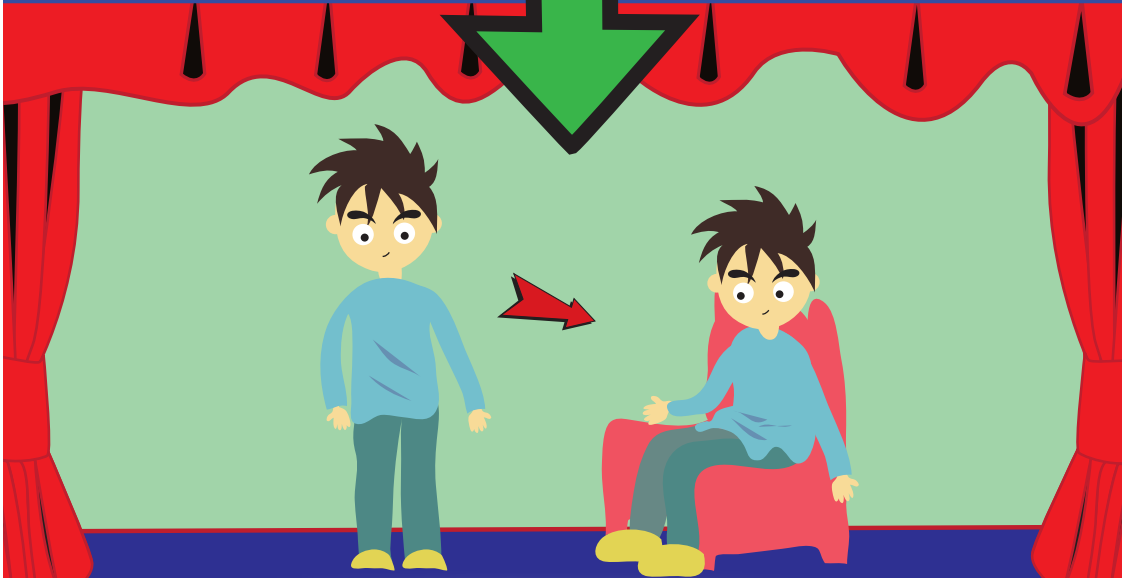
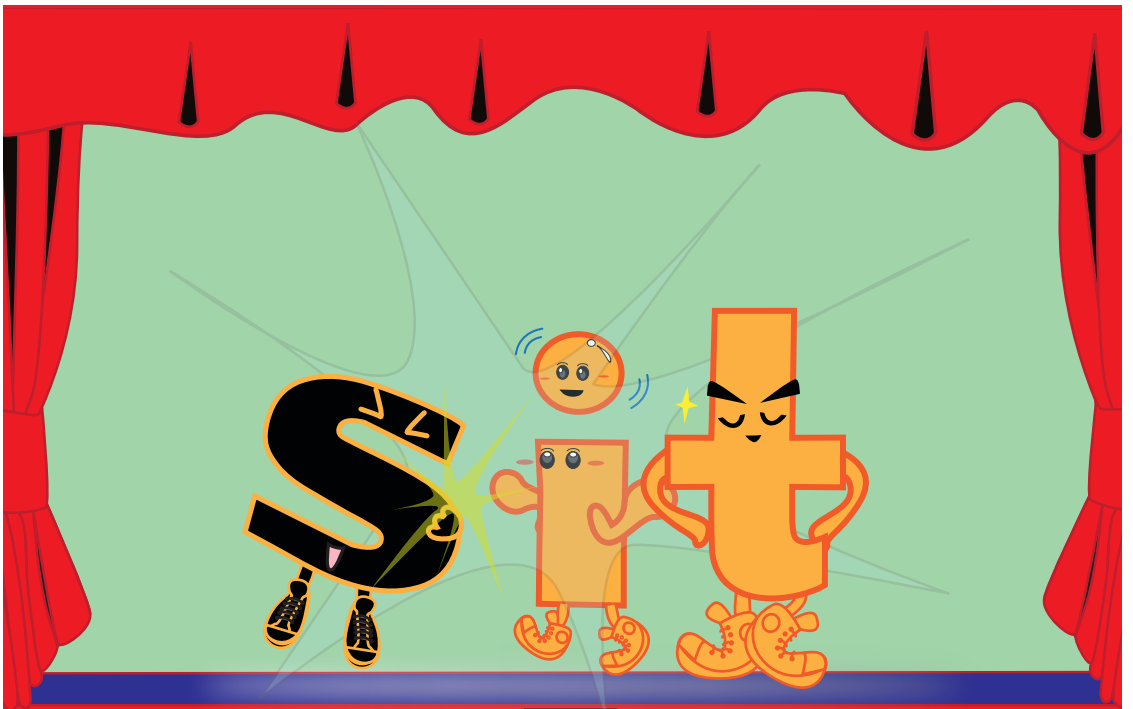


thin

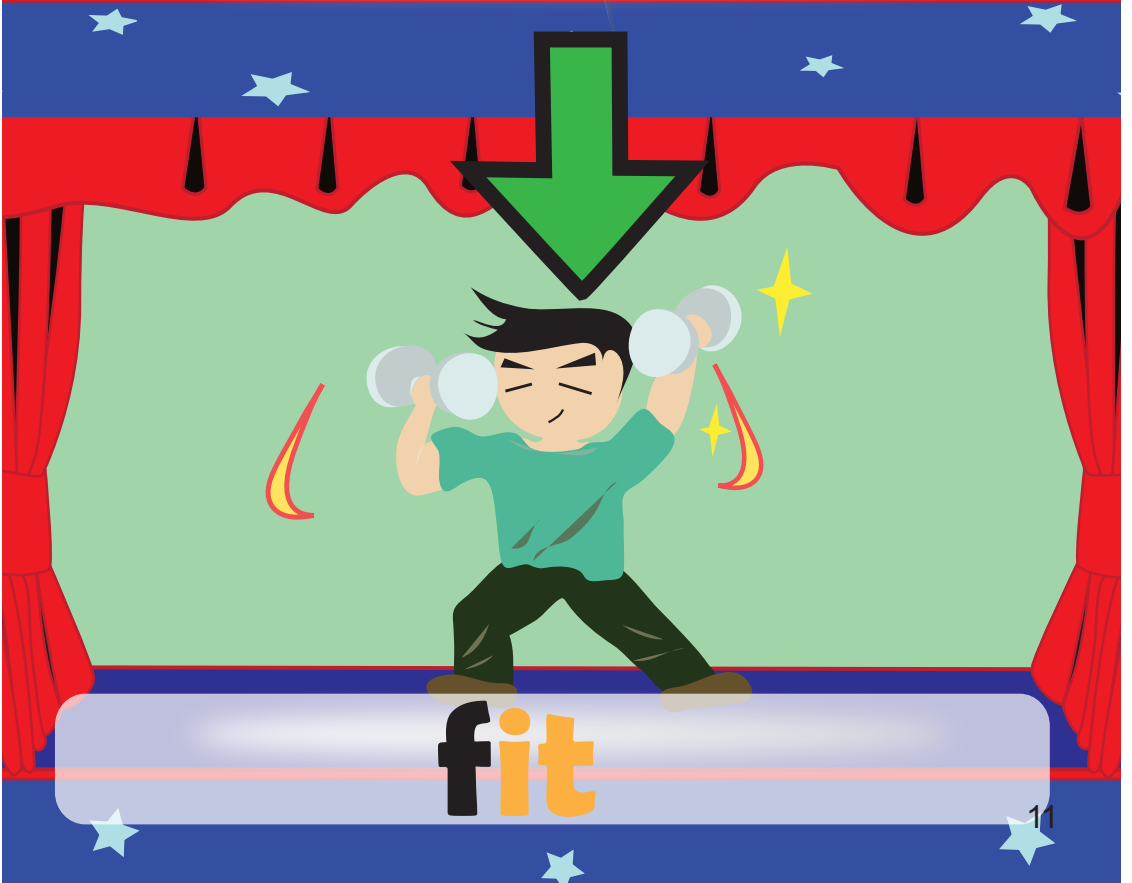
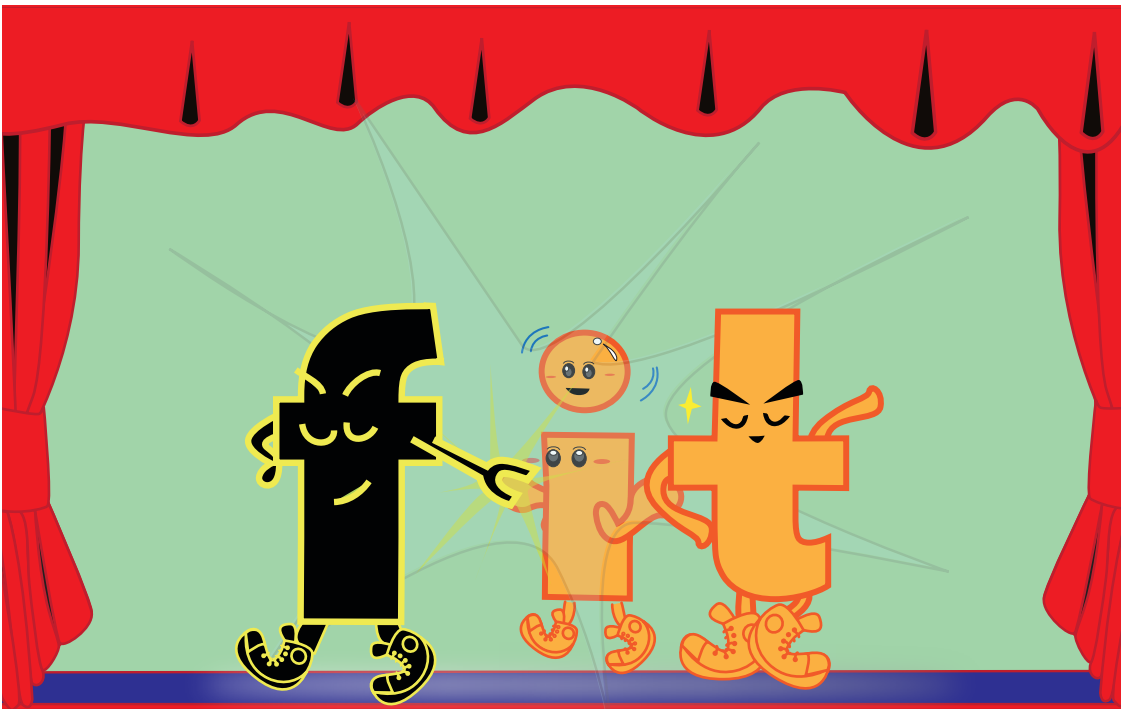


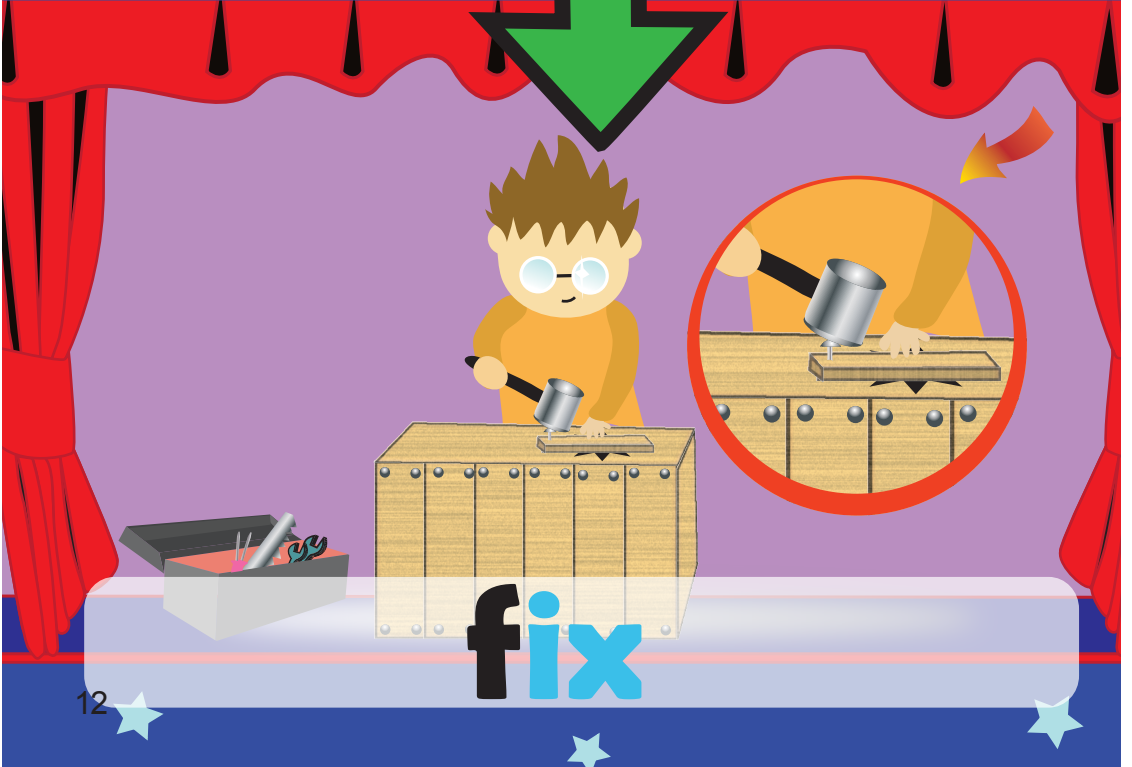
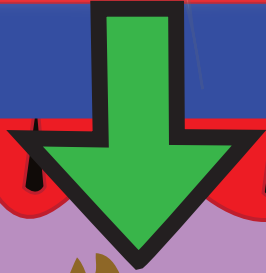
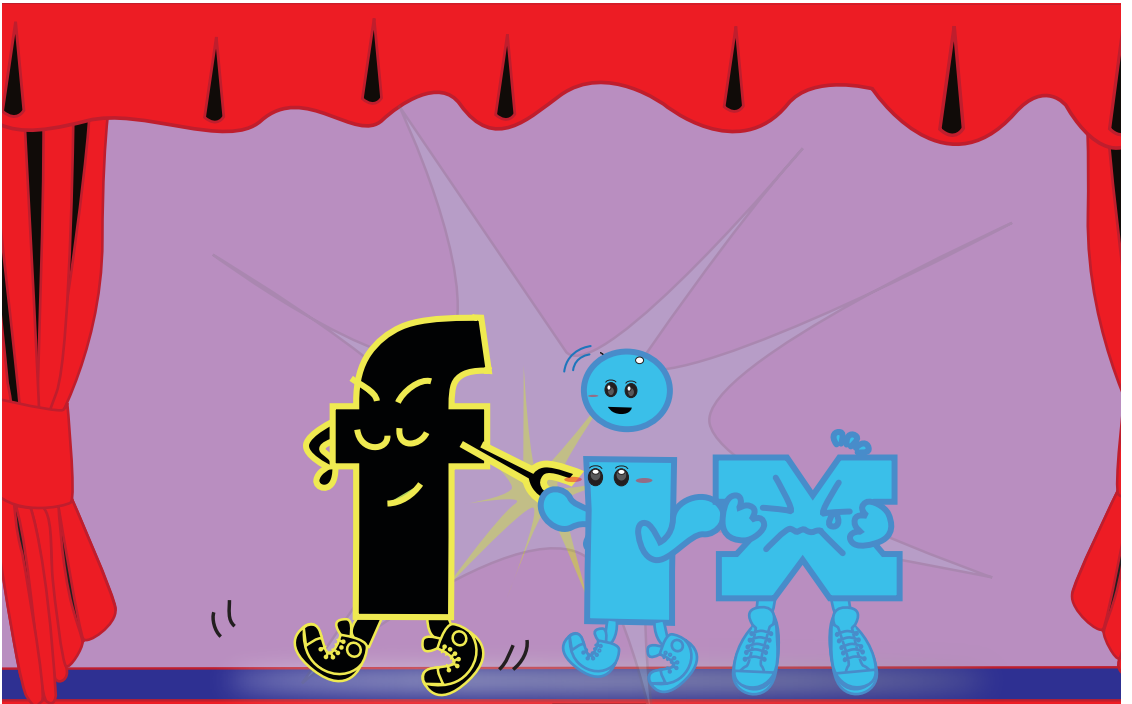
win

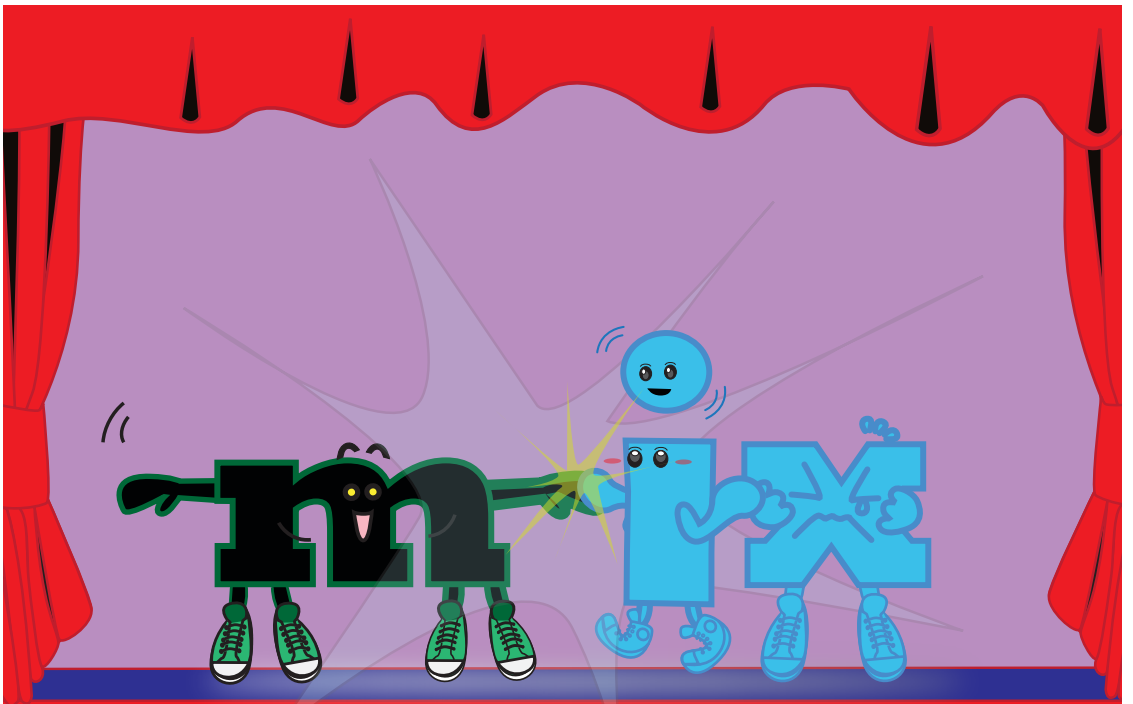


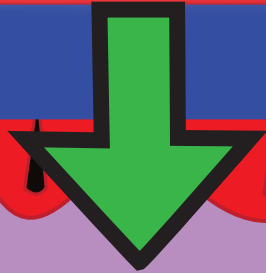
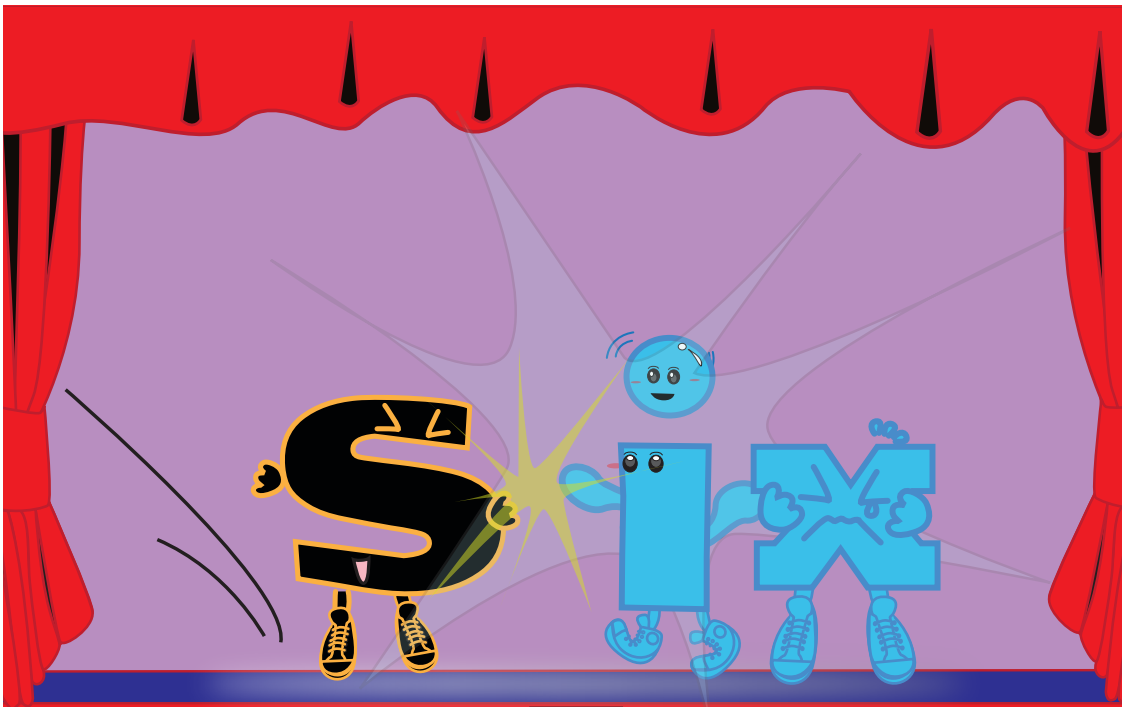


sit



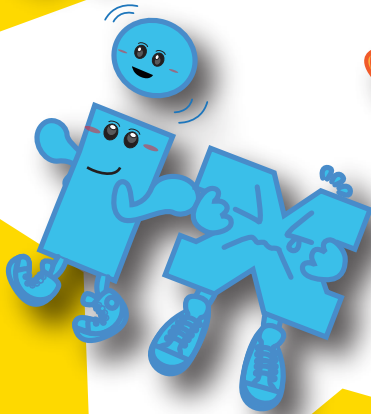
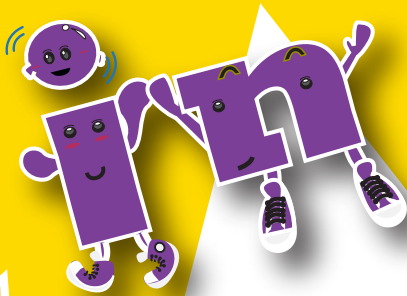






six





See You



**in**

**bin**

**fin**

**pin**

**tin**

**win**

**chin**

**thin**

**it**

**fit**

**hit**

**sit**

**ix**

**fix**

**mix**

**six**

Big Book 11 Souperman	Week 1	'ed' 'eg' Book
	Week 2	'em' 'en' Book
	Week 3	'ib' 'id' 'ig' 'im' Book
	Week 4	'in' 'it' 'ix' Book

Native-speaking English Teacher Section  
Curriculum Development Institute  
Education Bureau  
Hong Kong Special Administrative Region

ISBN 978-988-8019-46-5



9 789888 019465 >